

Human HVEM/TNFRSF14 Protein

Cat. No. HVE-HM111

Description

Source	Recombinant Human HVEM/TNFRSF14 Protein is expressed from HEK293 with His tag at the C-Terminus. It contains Leu39-Val202.
Accession	Q92956-1
Molecular Weight	The protein has a predicted MW of 18.5 kDa. Due to glycosylation, the protein migrates to 32-48 kDa based on Tris-Bis PAGE result.
Endotoxin	Less than 1EU per μg by the LAL method.
Purity	> 95% as determined by Tris-Bis PAGE > 95% as determined by HPLC

Formulation and Storage

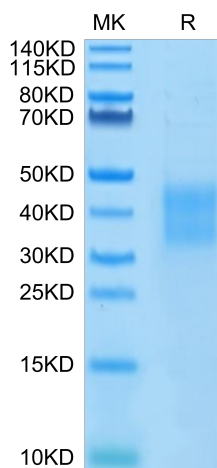
Formulation	Lyophilized from 0.22 μm filtered solution in PBS (pH 7.4). Normally 8% trehalose is added as protectant before lyophilization.
Reconstitution	Centrifuge the tube before opening. Reconstituting to a concentration more than 100 $\mu\text{g}/\text{ml}$ is recommended. Dissolve the lyophilized protein in distilled water.
Storage	-20 to -80°C for 12 months as supplied from date of receipt. -80°C for 3-6 months after reconstitution. 2-8°C for 2-7 days after reconstitution. Recommend to aliquot the protein into smaller quantities for optimal storage. Please minimize freeze-thaw cycles.

Background

Herpesvirus entry mediator (HVEM), also known as tumor necrosis factor receptor superfamily member 14 (TNFRSF14), is a human cell surface receptor of the TNF-receptor superfamily. Two TNF superfamily ligands lymphotoxin α (TNF- β) and LIGHT (TNFSF14) are identified as cellular ligands for HVEM and initiate the positive signaling.

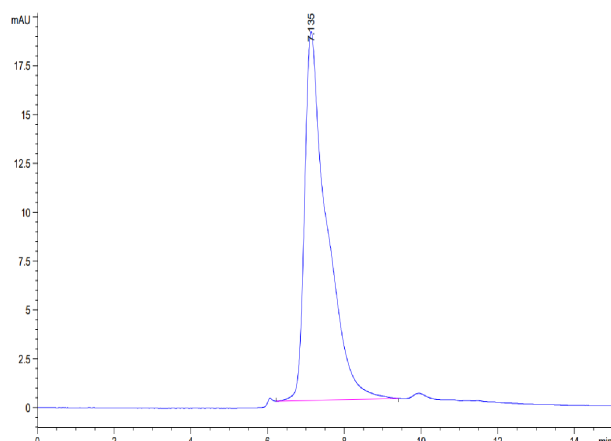
Assay Data

Tris-Bis PAGE



Human HVEM on Tris-Bis PAGE under reduced condition. The purity is greater than 95%.

SEC-HPLC



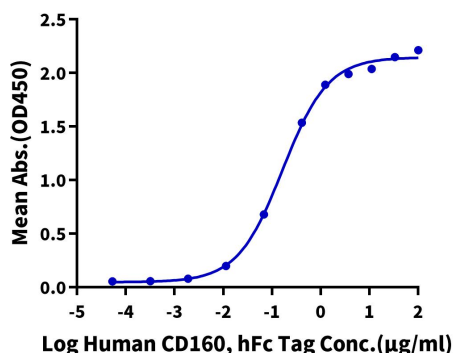
The purity of Human HVEM is greater than 95% as determined by SEC-HPLC.

Assay Data

ELISA Data

Human HVEM, His Tag ELISA

0.2µg Human HVEM, His Tag Per Well

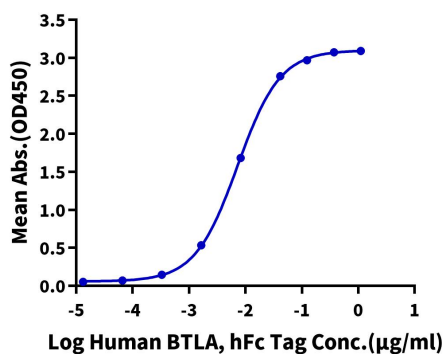


Immobilized Human HVEM, His Tag at 2µg/ml (100µl/Well) on the plate. Dose response curve for Human CD160, hFc Tag with the EC50 of 0.17µg/ml determined by ELISA (QC Test).

ELISA Data

Human HVEM, His Tag ELISA

0.2µg Human HVEM, His Tag Per Well

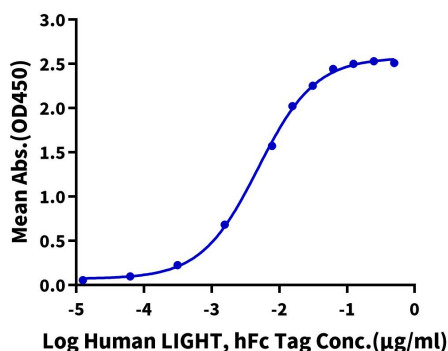


Immobilized Human HVEM, His Tag at 2µg/ml (100µl/Well) on the plate. Dose response curve for Human BTLA, hFc Tag with the EC50 of 7.2ng/ml determined by ELISA.

ELISA Data

Human HVEM, His Tag ELISA

0.1µg Human HVEM, His Tag Per Well



Immobilized Human HVEM, His Tag at 1µg/ml (100µl/Well) on the plate. Dose response curve for Human LIGHT, hFc Tag with the EC50 of 4.9ng/ml determined by ELISA.